

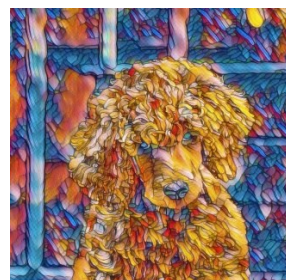


# 2025 MATCH

Monday, April 21st, 2025

12:00 PM

Purina Farms Event Center  
Gray Summit, MO



**ARPC Match Judge: Terry Tate**

Match Chairman: TBD

Trophy Chairman: Jean Urban

**Prizes:** Ribbons, Rosettes & Trophies

Toys for ALL Entries!

**Silent Auction**

**Entry Fee: \$20.00**

## Match is Open to ALL Members and Non-Members!

Entries taken until ½ hour before judging of Match.

ARPC is not responsible for accidents, injuries or losses that occur on the grounds of the Event Center.

**Rules:** Professional handlers are allowed. Dogs entered in, Bred-By-Exhibitor class, must be handled by the breeder of record. (That means if you bred the dog and owned it at the time it was bred you are the breeder of record. If you later sold it, then you may not show that dog in BBE class.) The classes will be puppy 3-6; 6-9; 9-12; Bred by Exhibitor; 12-18 and Open. The puppy classes will be judged best in puppy classes from the winners of the 4-6; 6-9; 9-12 classes. The adult class for winners will be first in the BBE class, 12-18 class and Open classes. There is only one BBE class not a BBE puppy and BBE open. So, list the classes as Dogs and Bitches in each variety 4-6; 6-9; 9-12, 12-18, Bred by Exhibitor, and Open. Best Puppy in each Variety will compete for Best Puppy in Match. Best Adult in each Variety will compete for Best Adult in Match. Best BBE in each Variety will compete for Best BBE in Match. Each of the three BOV match winners will compete for BEST IN MATCH. Best in Match Winner will compete with the Winner of the Silver and Brown clubs.

.....  
**PRINT CLEARLY!**

Owner's Name: \_\_\_\_\_

Breeder's Name: \_\_\_\_\_

Dog's Registered Name: \_\_\_\_\_

**CHECK MARK the Variety, Sex and Class for per entry, one entry per sheet.**

TOY ☐ MINIATURE ☐ STANDARD ☐

DOG ☐ BITCH ☐

4 to 6 Mo. ☐ 12 to 18 Mo. ☐

6 to 9 Mo. ☐ BBE ☐

9 to 12 Mo. ☐ OPEN ☐